



A versatile cantilever literature stand, collapsible for easy transportation. Ideal for exhibition displays.

## Features & benefits

- Simple lift and lock assembly
- Stable and stylish curved base
- A4 portrait format
- 6 pockets
- Available silver powdercoated finish
- Literature can be stored in Expression whilst folded for transportation
- Carry bag included



Integral carry handle for easy transportation



Folds down quickly using cantilever action

### hardware specifications

Assembled dimensions (mm):  
1600 (h) x 265 (w) x 320 (d)  
63" (h) x 10.4" (w) x 12.6" (d)  
Closed dimensions (mm):  
380 (h) x 265 (w) x 320 (d)  
15" (h) x 10.4" (w) x 12.6" (d)  
Weight:  
8.1kg (17.8lbs) approx (including carry bag)

### pocket specifications

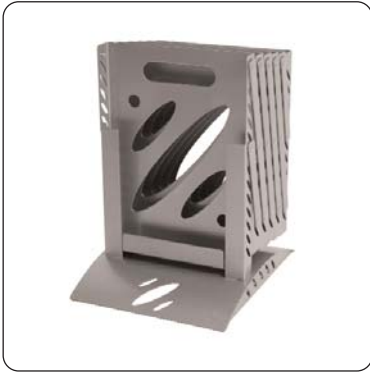
Max document dimensions (mm):  
325 (h) x 232(w)  
12.8" (h) x 9.1" (w)  
  
Expression is suitable for A4 literature

### additional info

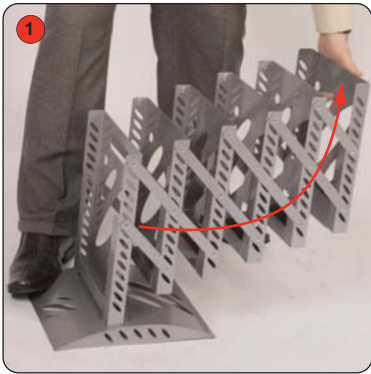
Availability:  
Silver powdercoated finish  
  
Bag dimensions (mm):  
400 (h) x 300 (w) x 420 (d)  
15.7" (h) x 11.8" (w) x 16.5" (d)

# Assembly Instructions

**Important: Ensure fingers are kept clear of folding mechanism when opening and closing the unit**



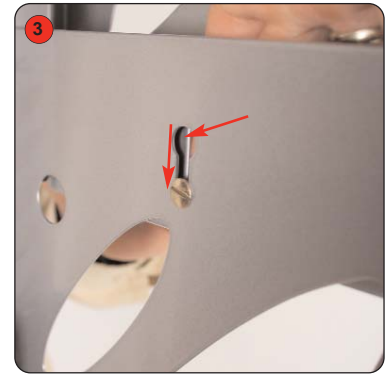
Kit Includes: Illusion and carry bag



1 Place foot gently on base, grab handle and pull out and upwards in one smooth motion.



2 Once the unit is upright, locate the fastener in the top pocket and pull to the top of the slot.



3 Slot fastener through the top of the second pocket and push down slot to secure the unit into position.