

# Linear Elliptical Counter



*This lovely elliptical shaped counter allows for quick fix graphics and has an internal shelf as standard. This stand alone platform would be an important element in any exhibition stand.*

## features & benefits

- Anodised aluminium construction
- Flat packed, easy to transport and quick to assemble
- 50mm modular post system
- Linear twist and lock
- Carry bag are available as extra cost options (AB112A)
- Available with top shelf LK027-002

## hardware specifications

Hardware dimensions (mm):

**LK027-001** 1010(h) x 900(w) x 450(d)

**LK027-002** 1095(h) x 900(w) x 450(d)

Load Bearing:  
40kg approx

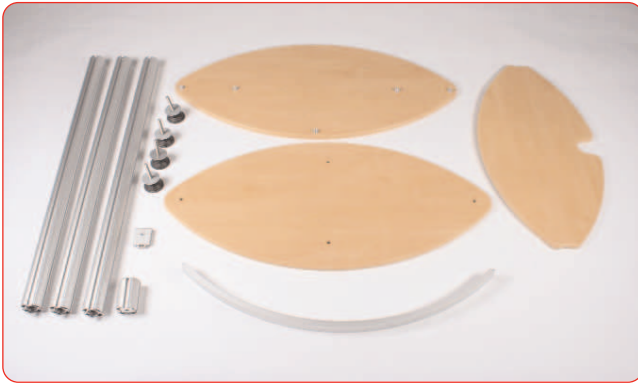
## graphic size (mm):

Recommended graphic size (mm):

**LK027-001** - 1 x 949 x 860mm and 1x 600 x 860mm

Recommended graphic substrate:  
2-3mm thick foam boarder

# Assembly Instructions



Kit Includes: 1x table top, 1x base, 1x internal shelf 3x linear 50mm round post, 1x foot locator post, 4x adjustable feet, 2x wing extrusion, 1x Shelf locator and 1x curved beam



Start by placing the top of the counter face down with the twist and lock locators facing up. Place the posts into the twist and lock locators and twist anti-clockwise to lock and clockwise to unlock.



Place the base of the counter over the linear post and place the adjustable feet through the washer and into the base of the counter. Screw into the post until in required position. Hand tighten the nut to secure into place.



Repeat step 2 using the 50mm round foot locator



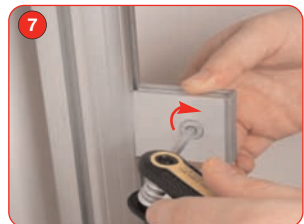
To attach the front graphic simply clip the PVC wing extrusion into the channel in the 50mm round post.



Place one side of the small back graphic into the channel on the 50mm round post. Curve the graphic round and place the other side of the graphic into the channel on the opposite post



Attach the curve beam by placing the locks in each end of the channel on the 50mm round posts and slide down over the graphic. Tighten the cam locks to secure into place



Place the shelf locator on the post opposite to the curved beam, align the top of the shelf locator with the top of the curved beam. Tighten the cam lock to secure into place



Place the shelf on top of the shelf locator and on top of the curved beam until securely in position

## Top shelf assembly



Screw the stand-off's down onto the stand off locators until fully secure. Repeat this for the remaining stand off's



Place the pre-drilled holes of the top shelf over the stand-off until in required position



Screw down the top of the stand off over the top shelf until fully secure, repeat these steps for the rest of the stand-off's