

# Original Banner 1

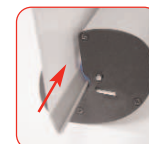
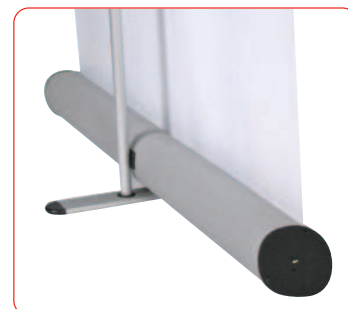
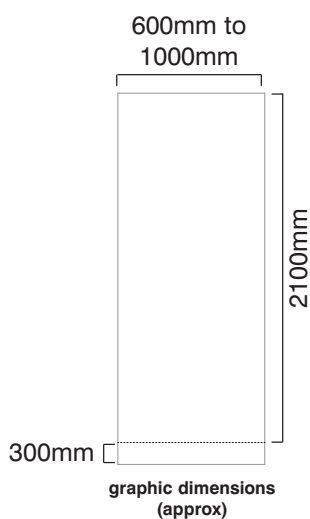
Based on a very popular design, this versatile roller banner is lightweight, portable and very simple to use.



## Features & benefits

- Choice of widths 600, 800 or 1000mm (Custom widths between 600 to 1000mm are also possible made to order, please enquire)
- Available in anodised silver or black powdercoated finish
- Increased internal housing for thicker graphics (up to 450\* microns banner vinyl)
- Quick-change graphic release
- Quick-change Universal rail
- Twist-out foot with push-fit pole fixing
- Bungee pole
- Supplied with quality foam padded carry bag

\*Please test your substrate suitability before use



Slide-in Graphic

### hardware specifications

Hardware Dimensions (mm):  
2110 max (h) x 820 (w) x 365 (d) approx.  
83" (h) x 32.3" (w) x 14.4" (d) approx.

Base Dimensions (mm):  
95 (h) x 820 (w) x 365 (d) approx.  
3.8" (h) x 32.3" (w) x 14.4" (d) approx.

Weight:  
2.5kg (5.5lbs) approx. (including carry bag)

Included in kit:  
Base, top rail, bungee pole and carry bag

### graphic specifications

Visible Graphic Dimensions (mm):  
2100 max (h) x 600 to 1000 (w)  
82.7" max (h) x 23.6" or 39.4" (w)

Substrate:  
Add 300mm (12") to base of graphic to allow for roller mechanism

Reccomended material thickness:  
225 - 450 microns (8.86 - 17.72 Mills)

### additional info

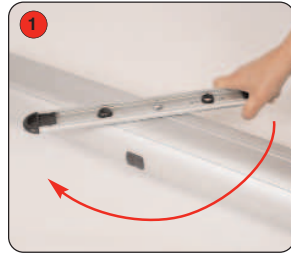
Availability:  
Anodised silver or black powdercoated finish

# Assembly Instructions

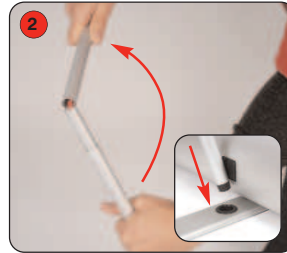
## Banner stand assembly



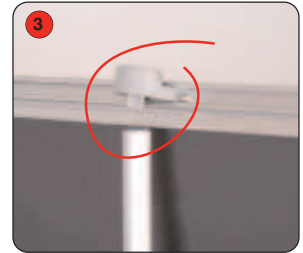
Kit includes: Bungee pole, Base, Top rail and carry bag



1 Twist out the stabilising foot from the base. Turn the base over.

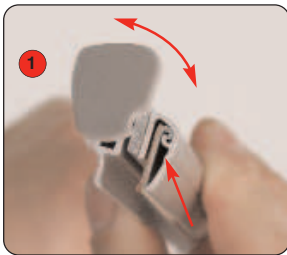


2 Open up the bungee pole and lock all 3 parts together. Insert pole into stabilising foot. (Moulded end of pole into foot)

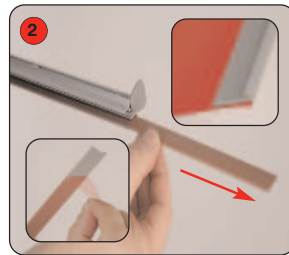


3 Lift the top rail to raise the graphic from the base. Lean the banner backwards and continue to extend the graphic. Secure the graphic into position by locating the top rail onto the pole.

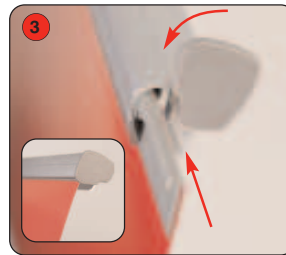
## Graphic attachment - Adhesive rail option



1 Rotate the rail end cap to expose the plastic adhesive rail insert.



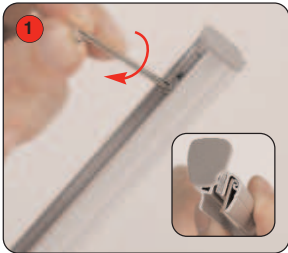
2 Slide the rail insert from the top rail. Adhere the insert to the **front** of the graphic.



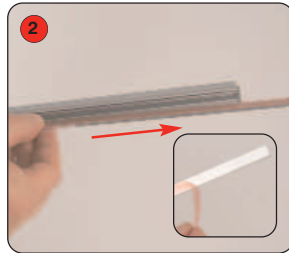
3 Slide the rail insert and graphic into the top rail. Close the rail end cap.

**Important: Hold the top rail whilst lowering the banner to prevent damage to the graphic. (do not drop)**

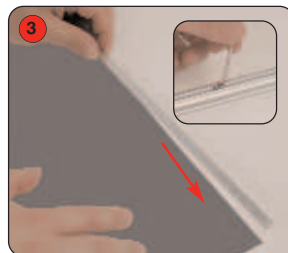
## Graphic attachment - Grippa rail option (ideal for textiles and PVC)



1 Using the Allen key supplied with the user instructions, loosen the top rail screws. Rotate the rail end cap to expose the steel flat bar.



2 Slide the flat bar from the top rail and remove the backing paper.

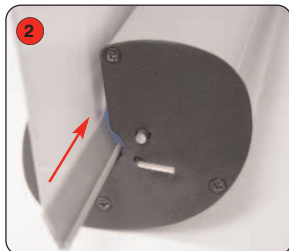


3 Adhere the flat bar to the **back** of the graphic. Slide the flat bar and graphic into the top rail. Tighten the screws to secure the top rail. Close the rail end cap.

## Graphic attachment - Base



1 Slide the plastic insert from the base and adhere to the back edge of the graphic.



2 Slide the insert and graphic into the base.



3 Whilst holding the graphic, remove the locking pin from the base and gently allow the graphic to retract.

**WARNING: Always attach graphic to base and top rail before removing the locking pin.**

After fitting, the graphic should be left for 24 hours before use to ensure the adhesive bonds sufficiently. Opening the base may invalidate the product warranty.