

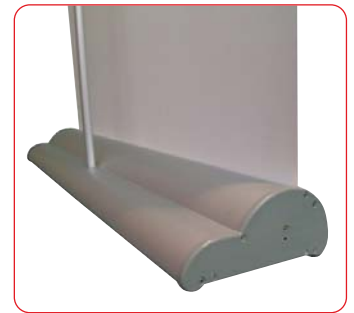
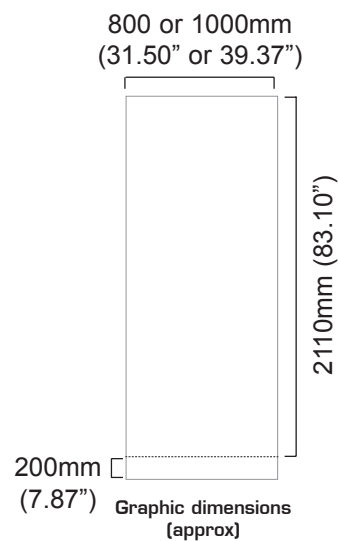


*This smart roller banner is styled on a highly popular base profile, with a substantial anodised silver casing it provides the perfect combination of design with stability.*

*The spring loaded rail clamp system and slide on/off applicator makes it easy to apply or change your graphic.*

### features & benefits

- Stylish lightweight components
- Ideal for point of sale, retail or exhibition environments
- Choice of 800mm or 1000mm widths
- Available in anodised silver
- Quick to assemble and easy to use
- Includes quality foam padded carry bag



hardware specifications	graphic specifications	additional info
<p>Hardware Dimensions (mm): 2200 (h) x 825 (w) x 180 (d) approx. 86.61" (h) x 32.48" (w) x 7.10" approx.</p> <p>Weight: 4.4kg (9.68lbs) approx (including carry bag)</p>	<p>Visible Graphic Dimensions (mm): 2110 (h) x 800 or 1000 (w) approx 83.10" (h) x 31.50" or 39.37" (w) approx</p> <p>Substrate: Add 200mm (7.87") to base of graphic to allow for roller mechanism. Recommended material thickness 225 - 300 Microns (8.86 - 11.81 Mils)</p>	<p>Included in kit: Top rail, base, bungee pole set and carry bag</p> <p>Availability: Anodised silver</p>

We are continually improving and modifying our product range and reserve the right to vary the specifications without prior notice. All dimensions and weights quoted are approximate and we accept no responsibility for variance. E&OE.

# Assembly Instructions

## Banner stand assembly



Kit includes: Top rail, base, bungee pole set and carry bag



Assemble the bungee pole set.



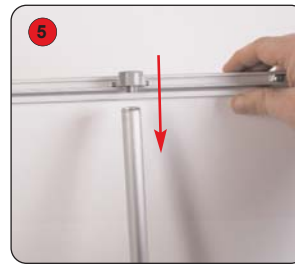
Fit the bungee pole into the banner stand base



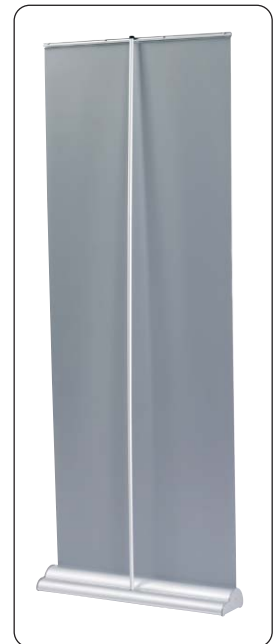
Lift the top rail to raise the graphic from the base.



Lean the banner stand backwards and continue to extend the graphic.

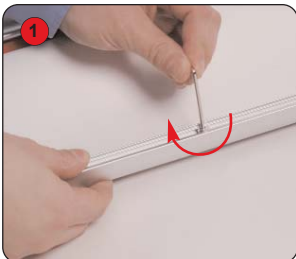


Secure the top rail cup onto the bungee pole.

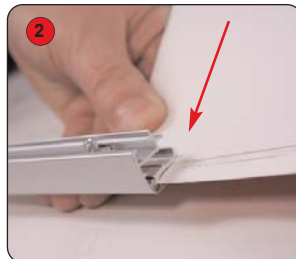


**Hold the Top rail whilst lowering the banner, (do not drop) to prevent damage to the graphic.**

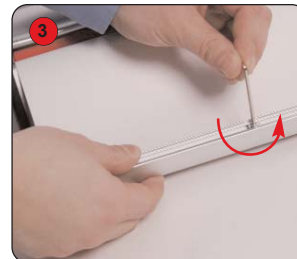
## Graphic attachment instructions



Loosen the Top grip rail screws using a 2.5mm allen key.



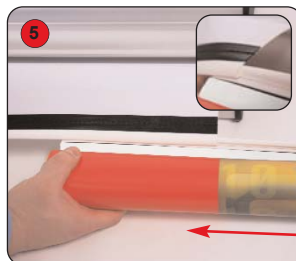
Squeeze open the Top grip rail and slide the graphic squarely into the rail.



Tighten the Top grip rail screws.



Align and adhere the graphic squarely to the slider strip. (attach to front face of graphic)



Slide the graphic onto the leader strip.



Whilst holding the Top rail remove the locking pin from the base and gently allow the graphic to retract.

After fitting, the graphic should be left for 24 hours before use, to ensure the adhesive bonds sufficiently.

**Note: Opening the banner stand base may invalidate the product warranty.**